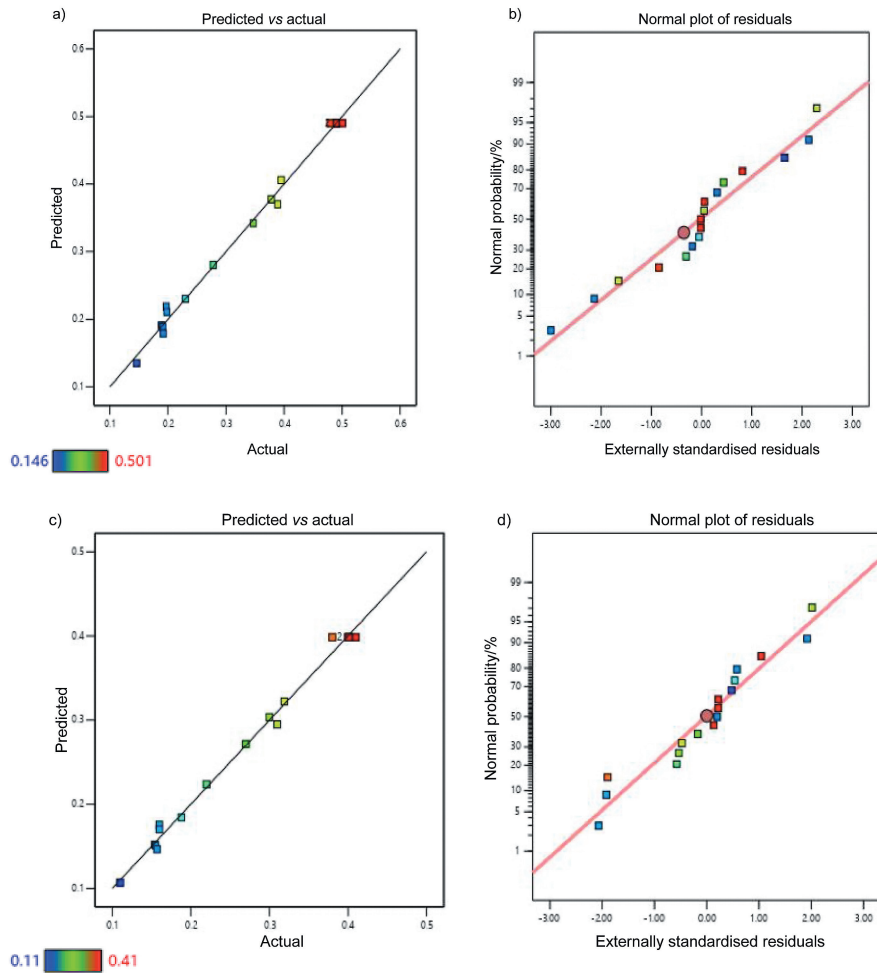
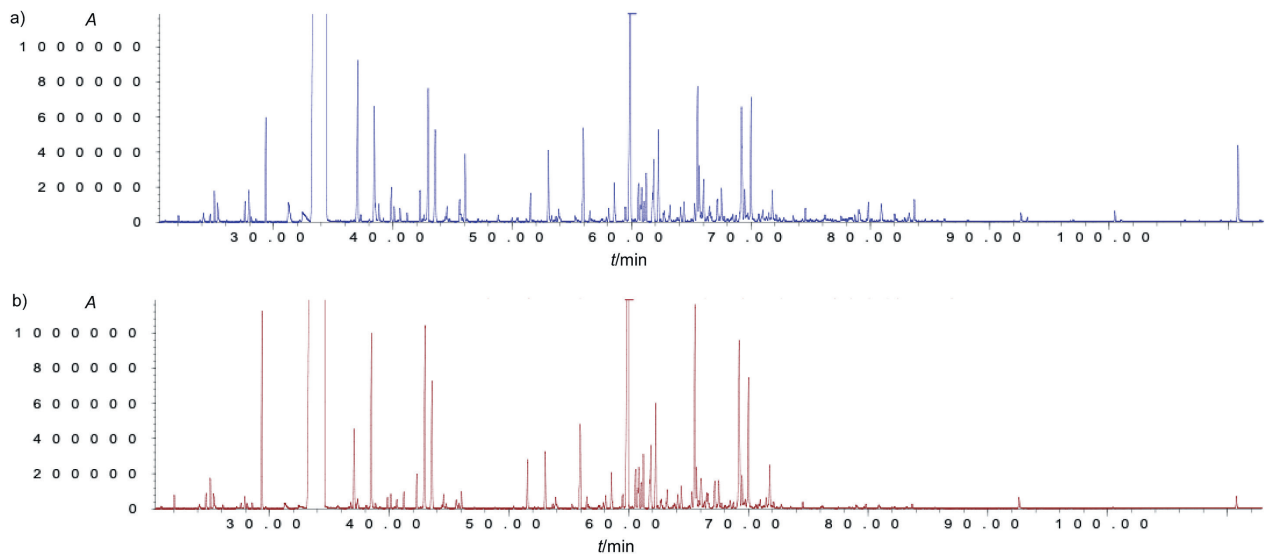


[Back to article](#)



**Fig. S1.** Model diagnostic plots of oven-dried samples: a) predicted *versus* actual value, b) normal probability plot of residuals, and room-dried samples: c) predicted *versus* actual value at the second standard condition (indicates that the model's predictions are highly accurate), and d) normal probability plot of residuals

[Back to article](#)



**Fig. S2.** Results of gas chromatography analysis of *Lippia adoensis* essential oil extracted from: a) oven-dried samples and b) room-dried samples

[Back to article](#)**Table S1.** Single factor effect of particle size on essential oil yield

<i>d</i> (particle)/mm	Y(OD)/%	<i>P</i> / <i>W</i>	Y(OD)/%	<i>t</i> /min	Y(OD)/%
0.1–0.3	(0.0480.001) <sup>d</sup>	50	(0.000.00) <sup>d</sup>	10	(0.000.00) <sup>d</sup>
0.3–0.5	(0.330.01) <sup>c</sup>	300	(0.2040.008) <sup>c</sup>	20	(0.1090.002) <sup>c</sup>
0.5–0.7	(0.440.01) <sup>a</sup>	550	(0.4160.009) <sup>a</sup>	30	(0.3800.007) <sup>a</sup>
0.7–1.0	(0.3800.007) <sup>b</sup>	800	(0.3800.007) <sup>b</sup>	40	(0.3620.002) <sup>b</sup>

Values are expressed as mean±S.D. Different letters indicate statistically significant difference at p0.05. OD=oven drying

[Back to article](#)**Table S2.** Analysis of variance of the fitted models

Variable	Sum of squares <sup>a</sup>		DF	Mean square <sup>b</sup>		F-value		p-value	
	OD	RD		OD	RD	OD	RD	OD	RD
Model	0.2770	0.1845	8	0.0346	0.0231	164.61	147.86	0.0001	0.0001
A: particle size	0.0015	0.0011	1	0.0015	0.0011	7.32	6.93	0.0268	0.0301
B: power	0.0458	0.0286	1	0.0458	0.0286	217.48	183.09	0.0001	0.0001
C: time	0.0286	0.0183	1	0.0286	0.0183	135.76	117.54	0.0001	0.0001
AC	0.0048	0.0032	1	0.0048	0.0032	22.96	20.46	0.0014	0.0019
BC	0.0057	0.0031	1	0.0057	0.0031	27.09	20.10	0.0008	0.0020
A <sup>2</sup>	0.0316	0.0223	1	0.0316	0.0223	150.09	143.15	0.0001	0.0001
B <sup>2</sup>	0.0638	0.0439	1	0.0638	0.0439	303.28	281.23	0.0001	0.0001
C <sup>2</sup>	0.0760	0.0508	1	0.0760	0.0508	361.25	325.56	0.0001	0.0001
Residual	0.0017	0.0012	8	0.0002	0.0002				
Lack-of-fit	0.0014	0.0008	4	0.0004	0.0002	5.93	1.55	0.0564	0.3405
R <sup>2</sup>	0.9940	0.9933							
R <sup>2</sup> <sub>adj</sub>	0.9879	0.9866							
CV/%	4.42	4.72							
Adequacy precision	33.645	32.079							

<sup>a</sup>Sum of squares between average values and the overall mean, DF=degree of freedom, <sup>b</sup>sum of squares divided by degree of freedom, F-value=test for comparing term variance with residual variance, p<0.05 was considered to be significant. OD=oven drying RD=drying at room temperature