

Fig. S1. Results of PCR analysis of alleles of: a-c) durum wheat cultivars, and d-f) lines associated with the accumulation of Cd obtained from *usw47* marker

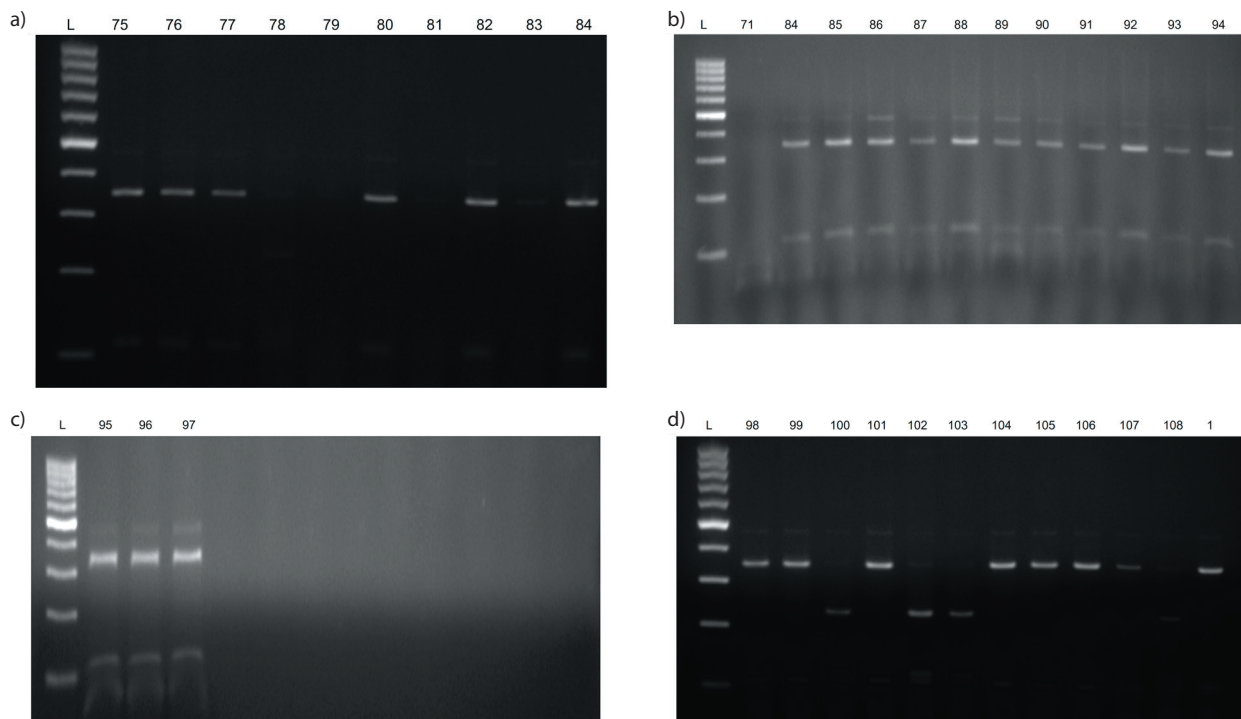


Fig. S2. Results of PCR analysis of alleles of: a-c) emmer and d) wild emmer genotypes associated with the accumulation of Cd obtained from *usw47* marker

Table S1. Accumulation of cadmium and other elements in durum wheat grain (control samples and samples grown in soil with the addition of $w(\text{Cd})=8 \text{ mg/kg}$ (dose))

Cultivar	$w(\text{mg/kg})$																	
	Cd		P		K		Ca		Mg		Fe		Zn		Cu		Mn	
	Control	Dose	Control	Dose	Control	Dose	Control	Dose	Control	Dose	Control	Dose	Control	Dose	Control	Dose	Control	Dose
Ege-88	0.18	0.30	2175.10	2394.67	8136.33	5296.00	606.80	358.10	812.30	854.33	32.89	20.44	35.89	27.81	3.94	2.38	18.33	19.58
Amanos-97	0.19	0.12	2684.67	2429.67	5246.00	5020.67	429.60	408.93	869.00	984.63	21.51	39.84	37.55	41.47	3.23	10.75	28.45	30.57
Sarıçanak 98	0.15	0.13	2262.00	2408.67	5123.67	4813.67	341.77	346.87	804.40	984.63	14.62	24.54	22.30	27.09	2.27	3.21	17.49	23.40
Şölen 2002	0.13	0.24	2275.67	2240.00	6685.67	5907.33	294.07	379.00	869.83	946.80	13.75	32.75	30.91	29.68	3.84	2.99	19.22	24.68
Turabi	0.10	0.40	2097.00	1936.00	5926.33	6598.67	481.53	525.33	865.10	841.17	31.54	27.03	32.27	25.75	4.92	4.43	23.19	29.04
Svevo	0.27	0.65	2673.67	2420.00	6119.33	5406.33	416.33	492.03	912.30	904.00	19.76	13.15	28.30	26.11	2.92	2.40	21.37	23.25
Zenit	0.21	0.46	2728.67	2448.00	7261.67	9801.67	428.37	551.10	989.83	728.20	15.01	28.32	33.27	26.47	3.23	2.60	14.94	20.51
Fırat-93	0.35	0.53	2298.00	2602.00	7208.67	7093.00	429.17	316.97	965.43	949.33	18.73	27.60	34.51	31.19	2.48	3.65	16.46	19.87
Fuatbey 2000	0.32	0.59	2371.67	2507.00	6500.67	7341.33	336.83	338.97	877.50	877.47	16.46	20.61	28.57	29.34	3.29	3.12	16.59	21.09
GAP	0.28	0.47	2081.33	2535.33	4668.33	5177.33	307.67	371.13	812.50	870.07	20.05	24.14	24.38	25.45	2.08	2.49	17.46	21.70
Gediz 75	0.36	0.42	2113.67	2161.67	6691.00	5862.67	348.40	502.87	811.43	771.17	17.46	30.60	32.71	21.57	2.38	2.84	15.39	18.07
Tüten 2002	0.37	0.55	1997.67	1771.33	5074.00	5643.33	246.97	382.43	844.33	862.70	17.09	25.75	25.98	28.81	1.94	1.98	18.37	25.37
Diyarbakır	0.38	0.91	1915.67	2074.33	4742.67	5819.33	429.30	457.17	974.90	768.17	20.41	23.74	29.62	32.44	2.00	2.36	14.61	25.16
Levante	0.36	0.7	2169.67	2033.33	7278.00	8852.33	418.27	476.07	803.03	845.93	22.39	35.95	26.05	26.56	2.21	3.62	13.30	16.63
F (C)	97.96**		7.85**		68.21**		12.12**		5.44**		21.76**		20.36**		62.28**		32.36**	
F (C × T)	28.12**		2.13*		21.65**		7.89**		9.20**		26.92**		8.45**		44.85**		3.41**	
LSD (0.05)	0.11		250.91		868.89		80.90		86.33		6.23		3.74		1.40		2.27	

C=cultivar, T=treatment; * $p<0.05$, ** $p<0.01$

Table S2. Accumulation of cadmium and other elements in durum wheat stem (control samples and samples grown in soil with the addition of w(Cd)=8 mg/kg (dose))

Cultivar	w/(mg/kg)																			
	Cd		P		K		Ca		Mg		Fe		Zn		Cu		Mn			
	Control	Dose	Control	Dose	Control	Dose	Control	Dose	Control	Dose	Control	Dose	Control	Dose	Control	Dose	Control	Dose		
Ege-88	0.66	2.34	1124.33	1117.10	15320.00	13540.00	4072.00	3974.33	1197.67	913.93	124.47	154.54	99.22	111.37	1.23	0.94	20.97	24.31		
Amanos-97	0.70	1.20	1046.00	1533.33	12613.33	12830.00	4600.33	3922.33	896.10	977.90	100.15	148.70	53.96	57.30	0.70	3.69	37.25	32.62		
Sarıçanak 98	0.57	1.20	749.43	727.97	12550.00	12370.00	3866.67	4234.00	1290.00	1272.33	134.77	142.97	99.24	70.62	3.73	3.52	24.55	27.96		
Şölen 2002	0.50	2.23	302.97	251.70	13156.67	13443.33	2846.67	3722.00	865.10	987.17	84.83	108.72	65.59	72.12	2.81	3.11	29.04	46.75		
Turabi	0.57	1.78	273.90	302.13	14536.67	12846.33	3484.00	3454.00	806.80	875.93	88.04	199.20	61.35	47.81	2.13	1.28	23.73	40.12		
Svevo	0.56	3.50	529.67	437.97	14973.33	14560.00	3800.00	4665.67	999.73	1041.77	129.85	120.93	81.02	97.14	1.06	3.13	34.35	53.43		
Zenit	0.63	1.67	498.70	494.70	11513.33	14066.67	3227.00	3572.00	774.67	633.70	103.84	109.83	166.09	42.96	3.97	4.81	17.55	26.66		
Fırat-93	0.70	1.64	247.00	308.30	14190.00	13906.67	3367.00	4838.33	624.17	834.80	140.30	150.07	53.91	71.39	3.68	4.06	16.58	33.41		
Fuatbey 2000	0.61	2.07	330.30	500.73	17786.67	18696.67	3716.00	3473.33	760.63	705.87	104.54	138.36	49.40	68.49	1.21	1.86	16.90	30.52		
GAP	0.82	1.33	193.17	243.73	15181.00	16236.67	3789.33	4537.67	915.90	911.60	98.73	181.43	81.45	79.89	3.89	5.63	12.51	35.60		
Gediz 75	0.62	1.55	342.00	601.27	13330.00	15946.67	3187.00	3927.00	875.00	1048.67	135.00	189.73	48.79	70.97	1.38	2.07	14.73	33.68		
Tütün 2002	0.48	2.61	360.43	643.97	12563.33	18936.67	3728.33	6710.67	804.73	1198.67	146.10	159.84	61.39	86.37	0.23	3.15	27.42	38.33		
Diyarbakır	0.60	1.71	288.07	472.23	13506.67	15360.00	3796.67	4892.33	875.07	1121.30	127.23	151.24	71.77	92.44	0.62	2.89	17.04	35.24		
Levante	0.65	1.36	277.40	366.53	15548.00	17310.00	3466.67	4367.33	640.53	878.73	150.07	147.10	51.80	71.78	2.91	4.30	16.18	25.70		
F (C)	36.06**		254.46**	48.18**	275.06**	141.40**	19.51**	106.87**	69.26**	663.40**										
F (C x T)	48.83**		15.22**	19.72**	16.56**	10.36**	17.25**	126.73**	17.81**	76.58**										
LSD (0.05)	0.43		146.58	1382.00	609.37	124.18	22.97	23.46	0.81	22.97										

C=cultivar, T=treatment; *p<0.05, **p<0.01